



SECTION 7 STATISTICAL INFORMATION



Twentynine Palms High School (1937) now Twentynine Palms Jr. High

Figure 24
City of Twentynine Palms
Assessed Property Values
FY2001-FY2010

Real Property								
Fiscal			Personal		Gross	Homeowners	Inventory	Net
Year	Land	Improvements	Property	Exemptions	Assessed Value	Exemptions	Exemptions	Assessed Value
2001	86,231,832	333,965,544	5,328,162	7,005,903	418,519,635	13,718,210	0	404,801,425
2002	89,692,998	338,367,529	6,176,037	7,069,727	427,166,837	13,922,402	0	413,244,435
2003	Detailed information not available				436,412,209		0	
2004	90,634,808	352,558,585	6,983,578	9,704,853	440,412,118	13,780,041	0	426,692,077
2005	93,901,952	375,336,424	6,297,946	9,347,846	466,188,476	13,776,938	0	452,411,538
2006	104,087,399	411,665,785	6,481,735	10,075,515	512,159,404	13,274,131	0	498,885,273
2007	Detailed information not available				640,447,928		0	
2008	180,782,538	584,927,806	9,533,973	12,099,788	763,144,529	13,246,177	0	749,898,352
2009	223,311,085	607,197,426	10,416,670	15,381,874	825,543,307	13,510,446	0	812,102,861
2010	223,102,840	593,357,699	1,404,774	15,189,840	607,566,938	13,830,209	0	802,675,473

Source: San Bernardino County's Assessed Values Annual Report

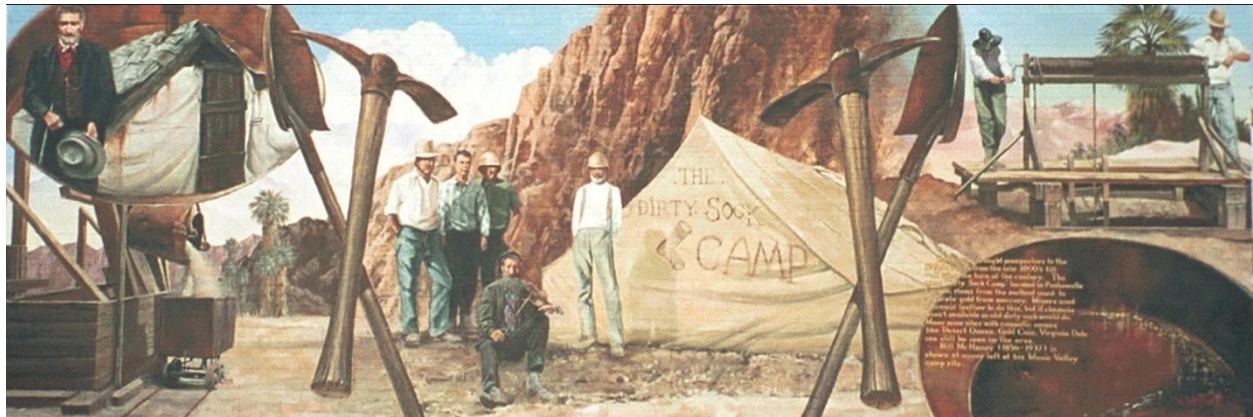


Figure 25
City of Twentynine Palms
ASSESSED VALUES OF SECURED AND UNSECURED PROPERTY
FY2001-FY2010

Fiscal Year	Secured		Unsecured		Total Net	
	Assessed Value	Assessed Value	Assessed Value	Assessed Value	Total Taxable Assessed Value	Annual % Increase
2001	409,309	9,330	418,662	0		
2002	417,010	10,287	427,374	2.08		
2003	425,153	11,398	436,628	2.17		
2004	429,303	11,354	440,734	.94		
2005	456,116	10,075	466,269	5.79		
2006	501,931	10,169	512,182	9.85		
2007	640,467	11,987	640,467	25.05		
2008	763,254	19,105	825,677	19.17		
2009	825,677	17,962	825,677	8.18		
2010	824,080	21,318	824,080	(0.19)		

Source: San Bernardino County's
Assessed Values Annual Report

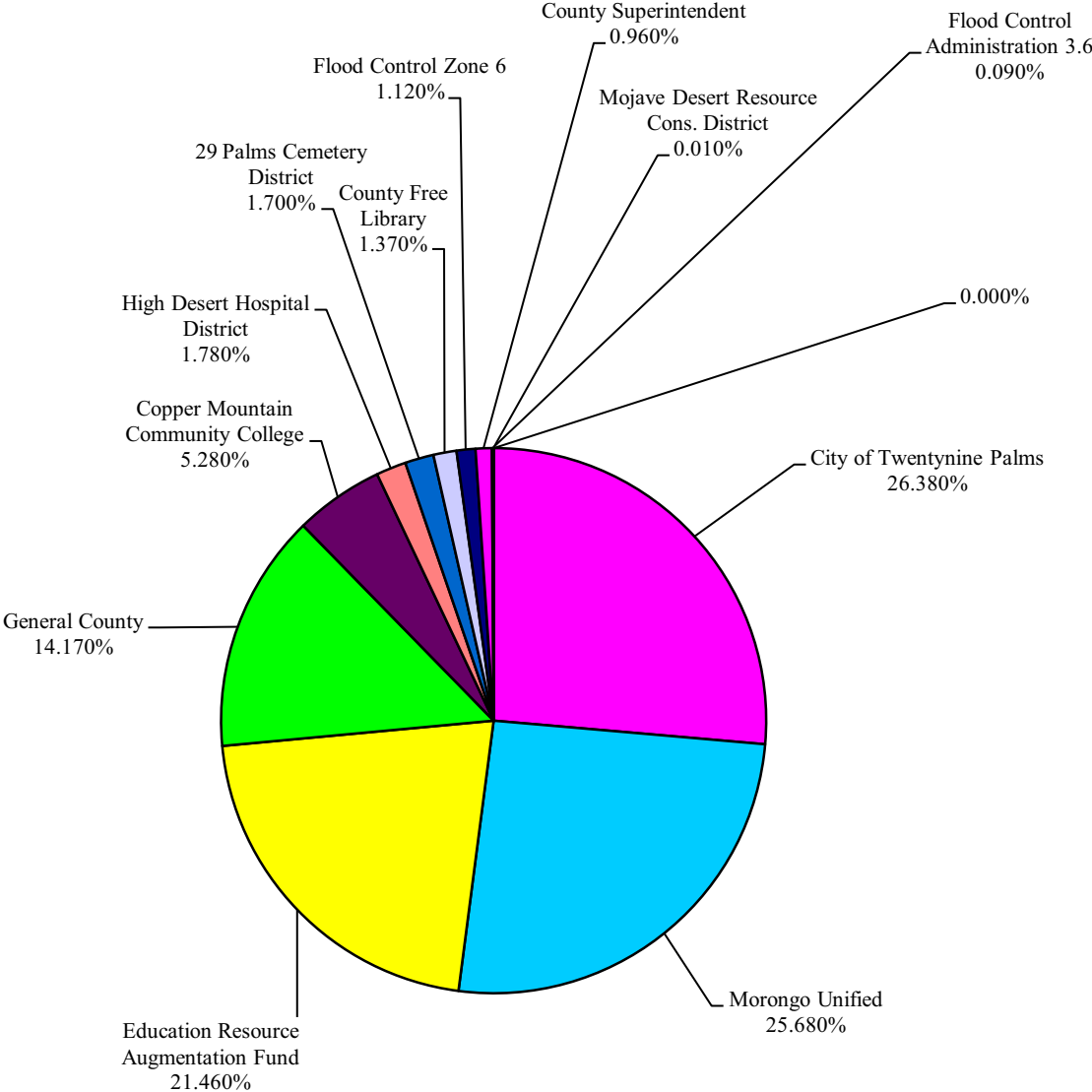
Figure 26
City of Twentynine Palms
Analysis of the General County \$1.00
percentage Factor For Each Taxing Agency
Within The City's Tax Rate Area

TAXING AGENCY	% FACTORS BY TAX RATE AREAS
City of Twentynine Palms	0.2638
Morongo Unified School District	0.2568
Education Revenue Augmentation Fund	0.2146
General County	0.1417
Copper Mountain Community College	0.0528
High Desert Hospital District	0.0178
29 Palms Cemetery District	0.0170
County Free Library	0.0137
Flood Control Zone 6	0.0112
County Superintendent	0.0096
Flood Control Administration 3.6	0.0009
Mojave Desert Resource Cons. District	0.0001
<hr/>	
TOTAL Prop 13 Rate	<u><u>\$1.00</u></u>

Note: The above factors represent each taxing agency's percentage share of incremental growth in general property taxes.

Source: San Bernardino County Auditor - Controller/Treasurer - Tax Collector

Figure 27
City of Twentynine Palms
Property Tax Distribution Percentages
To Local Taxing Agencies
Within the City of Twentynine Palms



This table shows how much of each property tax dollar goes to each taxing entity in the City of Twentynine Palms.

Figure 28
City of Twentynine Palms
Principal Property Taxpayers
FY2010

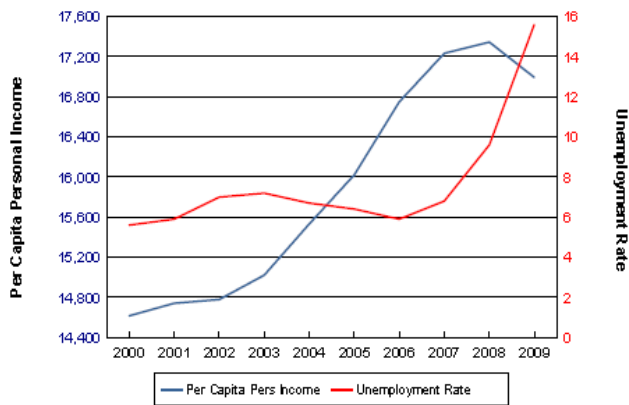
Taxpayer (A)	Type of Business	Assessed Value	% of Total Net Assessed Values
Twentynine Palms LLC	Residential	\$ 42,941,788	5.21
Burton Properties	Residential	8,315,340	1.01
Proactive Properties	Vacant	4,697,670	0.57
VN Hospitality	Commercial	4,550,711	0.55
Hospitality Ventures 1 LLC	Commercial	4,537,702	0.55
CAC Exchange I – Time Warner	Unsecured	4,130,316	0.50
Motel 6 Operating LP	Commercial	4,018,360	0.49
Pacific Costanzo-Lewis	Commercial	3,946,380	0.48
Sunwest Apartments, LLC	Residential	3,600,000	0.44
Burton Properties California	Residential	3,565,199	0.43
		824,080,488	10.23%

(A) Based on 2010 Assessed Property Values
Source: San Bernardino County Assessor's Office

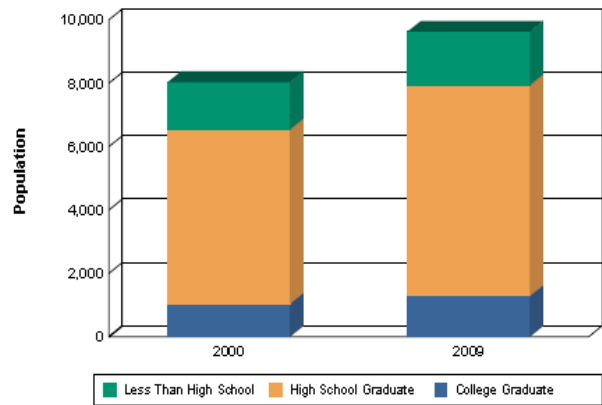
**Figure 29
City of Twentynine Palms
Demographic and Economic Statistics
2001-2010**

Year Ending	Population	Personal Income (In thousands)	Per Capita Personal Income	Unemployment Rate
2001	30,123	444,061	14,742	5.9%
2002	25,513	377,033	14,778	7.0%
2003	25,102	377,087	15,022	7.5%
2004	26,276	408,083	15,531	6.7%
2005	27,447	439,728	16,021	6.4%
2006	29,909	500,963	16,750	5.9%
2007	29,515	508,655	17,234	6.8%
2008	30,482	528,732	17,346	9.6%
2009	30,795	523,369	16,995	15.6%

Personal Income and Unemployment



Education Level Attained for Population 25 and Over



Notes and Data Sources:

*Decennial census data

Population: California State Department of Finance

Unemployment Data: California Employment Development Department

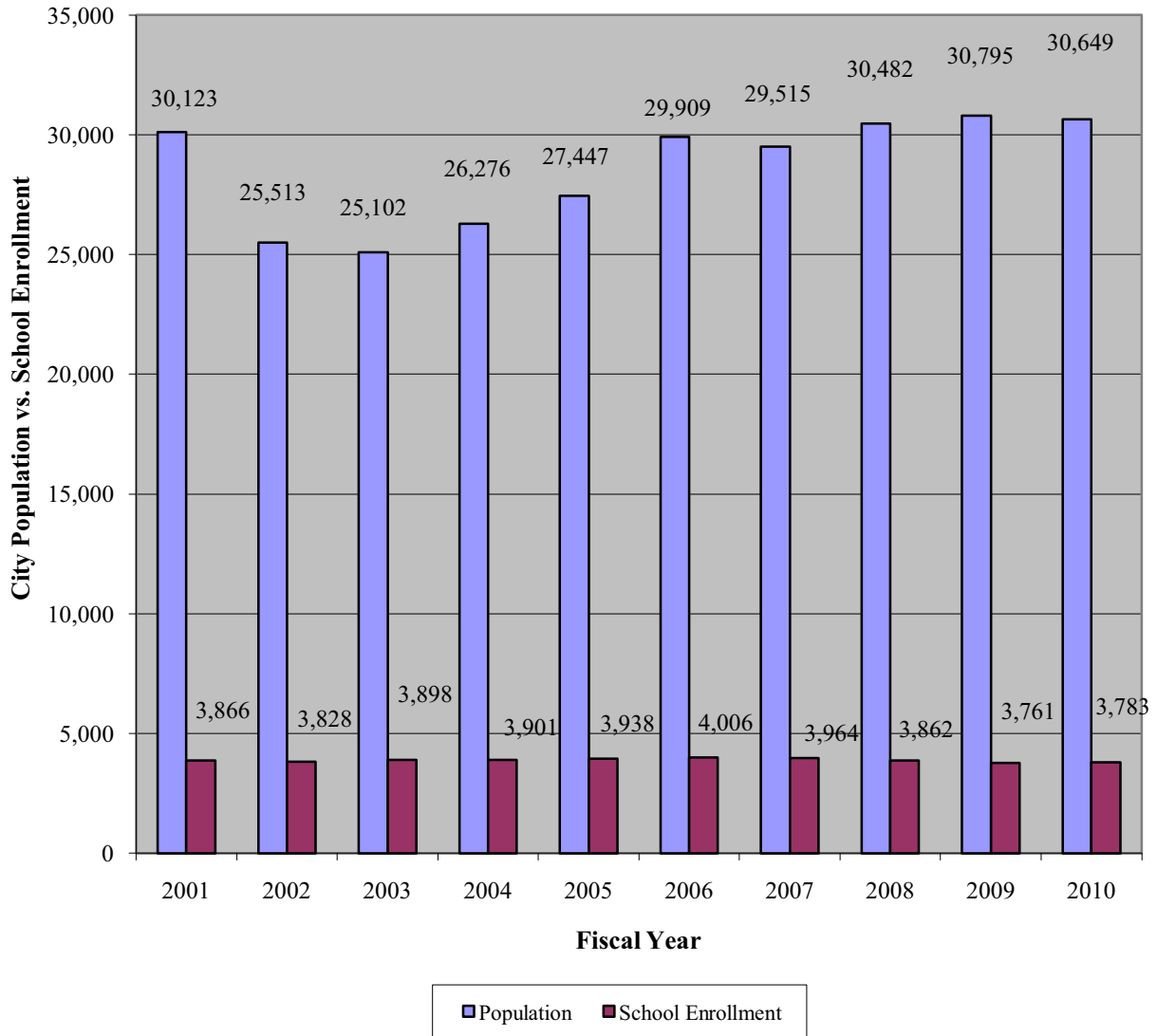
Figure 30
City of Twentynine Palms
Population Growth Compared to
School Enrollment Growth
FY2001 - FY2010

Fiscal Year	Population	Morongo Unified School District
2001	25,870	3,963
2002	27,589	3,866
2003	25,171	3,828
2004	25,957	3,901
2005	27,337	3,938
2006	27,498	4,006
2007	24,830	3,964
2008	27,966	3,862
2009	30,832	3,761
2010	30,649	3,783

**Source: California Department of Finance
Morongo Unified School District**

This table shows the growth in City population and school enrollment from FY2001 to FY2010. During this period, Twentynine Palms' population grew from 25,870 to 30,649. However, school enrollment declined slightly during this 10-year period from 3,963 in FY2001 to 3,783 in FY2010.

**Figure 31
City of Twentynine Palms
Population Growth Compared to
School Enrollment Growth
FY2001 - FY2010**



**Source: California Department of Finance
Morongo Unified School District**

This table shows the growth in City population and school enrollment from FY2001 to FY2010. During this period, the population grew from 30,123 to 30,649. School enrollment did not increase significantly during this period of time. The table shows school enrollment decreased from 3,866 in FY2001 to 3,783 in FY2010.

Figure 32 Miscellaneous Statistics

Date of Incorporation	November 23, 1987
Form of Government	Council/Manager
Number of Employees (Full-time, Part-time, Volunteers)	60
Area in Square Miles	58
Population	30,649
Government Facilities and Services:	
Miles of Paved Streets and Alleys	174
Number of Street Lights	326
Culture and Recreation:	
Community Centers	1
Senior Citizen Centers	1
Parks	4
Park Acreage	80
Swimming Pool Complex	1
Soccer Field	1
Baseball Fields (Luckie Park)	4
Baseball Fields (Knott Sky Park)	1
Fire Protection: Provided by Twentynine Palms Water District	
Number of Stations:	1
Police Protection: Contracted with San Bernardino County Sheriff's Department	
Number of Police Personnel and Officers	11
Number of Patrol Units	4
Elections:	
Registered Voters	5,498
Votes Cast Last Election	3,054
percentage Voting Last Election	56%